



TAPPING & SERVICE SADDLES

"The Standard of Excellence in the Industry"



STYLE CS12

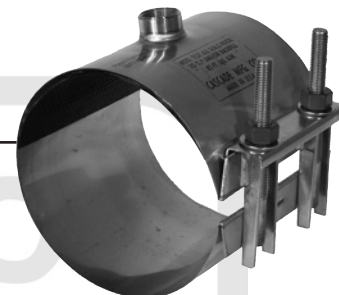


STYLE CS22

STYLE CSC1



STYLE CSC2



STYLE CNS1



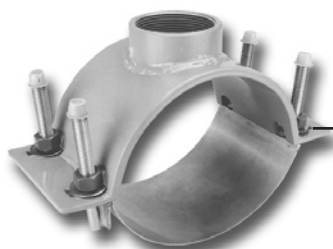
STYLE CNS2



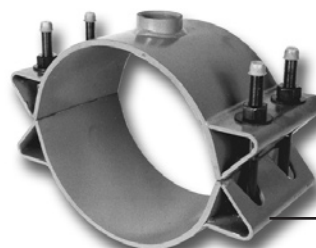
STYLE CDS1



STYLE CDS2



STYLE CFS



STYLE CFT-TO

1213 BADGER STREET • YORKVILLE, ILLINOIS 60560
(630) 553-0840 • (800) 426-4301 • FAX (630) 553-0181
www.cascademfg.com

FEATURES OF THE CASCADE ALL-STAINLESS STEEL CONSTRUCTION

TAPPED OUTLETS
T-304 SST

GASKET
Virgin SBR
Grade 30 - Other grades and compounds available upon request.

SHELL
T-304 SST

STUD & RECEIVER BARS
T-304 SST

STUD
18-8 SST 5/8-11, NC Rolled Thread

NUTS
18-8 SST Heavy Hex
Xylan Coated

WASHERS
18-8 SST
Spring Washer Available

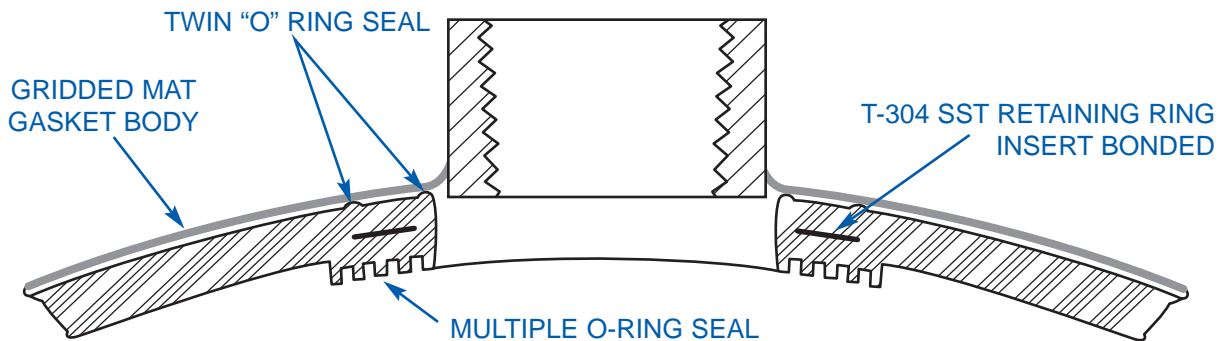
WASHER PLATE
T-304 SST

FINGER LUGS
T-304 SST

ALL SURFACES ARE FULLY PASSIVATED - ASTM A380

MULTIPLE O-RING RETAINED MAIN SEAL GASKET (Patent 6,588,767B2)

CASCADE EXCLUSIVE - Used on all CSC and CS Style Saddles. Excellent for HDPE Pipe.



FEATURES

- Widest Range Saddle Available
- Fits All Standard Diameters for Pipes in Nominal Sizes
- Full Hoop Support - Saddle Body Conforms to Pipe O.D.
- Certified ANSI/NSF-61

MATERIAL SPECIFICATIONS

Body T-304 Stainless Steel

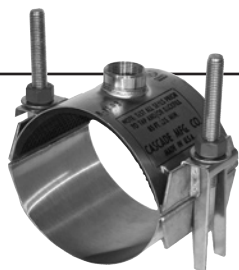
Outlet T-304 Stainless Steel

Gasket Triple O-Ring surrounded by full grid matt — SBR, Patent 6,588,767B2



Fasteners T-304 Stainless Steel 5/8-11, NC Rolled Thread; Xylan Coated Heavy Hex Nut

One saddle fits all types of pipe (AC, PVC, DI, Steel, CI)



STYLE CS12 • 5" WIDE DOUBLE BAND SADDLE

3/4", 1", 1 1/4", 1 1/2" AND 2" C.C. OR I.P.

**SHELL WIDTH 5"
MAXI-STRETCH
(RANGE - APPROX. 1.30")**

Nominal Pipe Size (inches)	O.D. Range (inches)	Catalog Number	Weight Each (lbs.)
4	4.36–5.66	CS12-0566-TAP	3.5
5	5.40–6.70	CS12-0670-TAP	3.7
6	6.43–7.73	CS12-0773-TAP	4.0
8	8.52–9.82	CS12-0982-TAP	4.4
10	10.65–11.95	CS12-1195-TAP	4.8
12	12.30–13.60 13.14–14.44	CS12-1360-TAP CS12-1444-TAP	5.0



STYLE CS22 • 8" WIDE DOUBLE BAND SADDLE

3/4", 1", 1 1/4", 1 1/2" AND 2" C.C. OR I.P.

**SHELL WIDTH 8"
MAXI-STRETCH
(RANGE - APPROX. 1.30")**

Nominal Pipe Size (inches)	O.D. Range (inches)	Catalog Number	Weight Each (lbs.)
4	4.36–5.66	CS22-0566-TAP	6.1
5	5.40–6.70	CS22-0670-TAP	6.6
6	6.43–7.73	CS22-0773-TAP	7.1
8	8.52–9.82	CS22-0982-TAP	8.0
10	10.65–11.95	CS22-1195-TAP	8.1
12	12.70–14.00 13.10–14.40	CS22-1400-TAP CS22-1440-TAP	9.1
14	14.00–15.30 15.40–16.70	CS22-1530-TAP CS22-1670-TAP	9.6
16	16.20–17.50 17.90–19.20	CS22-1750-TAP CS22-1920-TAP	10.6
18	19.20–20.40	CS22-2040-TAP	11.0
20	21.50–22.80	CS22-2280-TAP	11.6
24	25.70–27.00	CS22-2700-TAP	12.6

TO ORDER: Select desired catalog number and add tap size.

EXAMPLE: An 8" wide double band saddle for 6" pipe with a 2" iron pipe tap would be CS22-0773-2" IP.

NOTE: Other ranges and tap sizes available upon request.

FEATURES

- Best Choice for PVC Pipe
- One Piece Quick Insulation
- Provides Full Hoop Support
- Eliminates Distortion of Pipe
- Superior Corrosion Resistance
- Certified ANSI/NSF 61

MATERIAL SPECIFICATIONS

Body T-304 Stainless Steel
Outlet T-304 Stainless Steel
Welds Fully Passivated

Fasteners T-304 Stainless Steel 5/8-11, NC Rolled Thread; Xylan Coated Heavy Hex Nut

Gasket Triple O-Ring surrounded by full grid matt — SBR, Patent 6,588,767B2



SHELL WIDTH 5"

STYLE CSC1 • 5" WIDE SINGLE BAND SADDLE

3/4" AND 1" C.C. OR I.P.

Nominal Pipe Size (inches)	O.D. Range (inches)	Catalog Number	Weight Each (lbs.)
2	2.30–2.50	CSC1–250–TAP	1.2
2½	2.80–3.00	CSC1–300–TAP	1.2
3	3.35–3.65	CSC1–365–TAP	1.4
	3.70–4.00	CSC1–400–TAP	
4	4.45–4.85	CSC1–485–TAP	2.1
	4.95–5.35	CSC1–535–TAP	
5	5.35–5.80	CSC1–580–TAP	2.4
	6.54–7.00	CSC1–700–TAP	
6	6.99–7.45	CSC1–745–TAP	3.1
	8.62–9.08	CSC1–908–TAP	



SHELL WIDTH 8"

STYLE CSC2 • 8" WIDE SINGLE BAND SADDLE

3/4", 1", 1¼", 1½" AND 2" C.C. OR I.P.

Nominal Pipe Size (inches)	O.D. Range (inches)	Catalog Number	Weight Each (lbs.)
3	3.35–3.65	CSC2–365–TAP †	3.0
	3.70–4.00	CSC2–400–TAP †	
4	4.45–4.85	CSC2–485–TAP *	3.2
	4.95–5.35	CSC2–535–TAP	
5	5.36–5.80	CSC2–580–TAP	3.9
6	6.54–7.00	CSC2–700–TAP	5.1
	6.99–7.45	CSC2–745–TAP	
8	8.62–9.08	CSC2–908–TAP	6.0
	9.21–9.67	CSC2–967–TAP	
10	10.70–11.16	CSC2–1116–TAP	6.8
	11.75–12.21	CSC2–1221–TAP	
12	12.74–13.21	CSC2–1321–TAP	7.3
	14.00–14.47	CSC2–1447–TAP	

† – 3/4" or 1" C.C. or I.P.

* – NOT AVAILABLE WITH 2" TAPS

TO ORDER: Select desired catalog number and add tap size.

EXAMPLE: A 5" wide single band saddle clamp for 6" PVC with a 1" CC tap would be CSC1-0700-1" CC.

NOTE: Other ranges and tap sizes available upon request.

MATERIAL SPECIFICATIONS

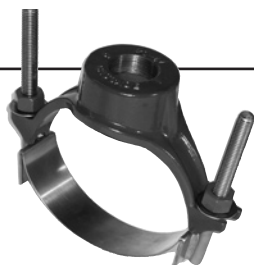
Body Ductile Iron A-536 (65-45-12) with epoxy coating compliant with ANSI/NSF 61

Straps T-304 SST

Bolts 18-8 SST 5/8-11, NC Rolled Thread

Gasket Virgin SBR Grade 30

Nuts 18-8 SST - Heavy Hex Xylan coated

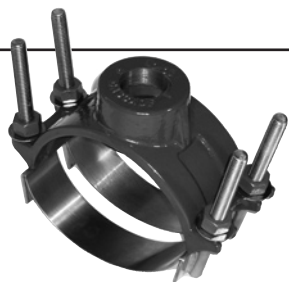


STYLE CNS1 • SINGLE S.S. STRAP SERVICE SADDLE

3/4", 1", 1 1/4", 1 1/2" and 2" C.C. or I.P.

Nominal Pipe Size (inches)*	O.D. Range (inches)			Catalog Number	Weight Each (lbs.)
	A IPS/CI	B CI/AC	C C900		
2 †	2.35-2.56	—	—	CNS1-2A-TAP	3.8
3	3.50 (only)	—	—	CNS1-3A-TAP	4.0
4	4.50-5.15	4.80-5.40	4.80	CNS1-4(Range A,B,orC)-TAP	4.8
6	6.63-7.25	6.90-7.60	6.90	CNS1-6(Range A,B,orC)-TAP	5.2
8	8.63-9.30	9.05-9.65	9.05	CNS1-8(Range A,B,orC)-TAP	6.5
10	10.75-11.40	11.10-12.12	11.10	CNS1-10(Range A,B,orC)-TAP	7.3
12	12.75-13.50	13.20-14.40	13.20	CNS1-12(Range A,B,orC)-TAP	8.1

† - AVAILABLE WITH 1/2" - 1 1/4" I.P./C.C. or 1 1/2" I.P. TAPS



STYLE CNS2 • DOUBLE S.S. STRAP SERVICE SADDLE

3/4", 1", 1 1/4", 1 1/2" and 2" C.C. or I.P.

Nominal Pipe Size (inches)*	O.D. Range (inches)			Catalog Number	Weight Each (lbs.)
	A IPS/CI	B CI/AC	C C900		
3	3.50 (only)	—	—	CNS2-3A-TAP	8.6
4	4.50-5.15	4.80-5.40	4.80	CNS2-4(Range A,B,orC)-TAP	9.4
6	6.63-7.25	6.90-7.60	6.90	CNS2-6(Range A,B,orC)-TAP	10.5
8	8.63-9.30	9.05-9.65	9.05	CNS2-8(Range A,B,orC)-TAP	11.4
10	10.75-11.40	11.10-12.12	11.10	CNS2-10(Range A,B,orC)-TAP	12.8
12	12.75-13.50	13.20-14.40	13.20	CNS2-12(Range A,B,orC)-TAP	13.2



STYLE CDS-LD • LARGE O.D. SERVICE SADDLES WITH S.S. STRAP

3/4" - 2" C.C. or I.P. TAPS

TO ORDER: Select O.D. range. Use catalog number and add tap size. **STYLE CDS-LD ARE NON-RETURNABLE**

Nominal Pipe Size (inches)*	O.D. Range (inches)	Catalog Number	Weight Each (lbs.)	Nominal Pipe Size (inches)	O.D. Range (inches)	Catalog Number	Weight Each (lbs.)
14	14.70-15.70	CDS-LD-15.70	17.0	20	22.90-23.90	CDS-LD-23.90	18.1
14 & 16	15.80-17.26	CDS-LD-17.26	17.1	24	23.75-24.75	CDS-LD-24.75	18.2
16 & 18	17.30-19.00	CDS-LD-19.00	17.3	24	24.60-25.60	CDS-LD-25.60	18.3
18 & 20	19.05-20.20	CDS-LD-20.20	17.5	24	25.65-26.50	CDS-LD-26.50	18.4
20	20.25-21.25	CDS-LD-21.25	17.7	27	26.55-27.55	CDS-LD-27.55	18.7
20	21.30-22.30	CDS-LD-22.30	17.8	27	27.60-28.55	CDS-LD-28.55	19.0
20	22.35-23.35	CDS-LD-22.35	18.0	30	29.60-30.50	CDS-LD-30.50	19.3

* Other sizes available, consult factory

MATERIAL SPECIFICATIONS

Body	Ductile Iron ASTM A-536 (65-45-12) with epoxy coating compliant with ANSI/NSF 61	U-Bolt	A-36 Steel with Corrosion Resistant Coating 5/8-11, NC Rolled Thread
Gasket	Virgin SBR Grade 30	Nuts	Heavy Hex



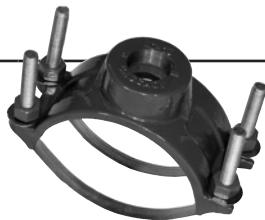
Not Recommended for PVC Pipe

STYLE CDS1 • SINGLE BALE SERVICE SADDLE

¾", 1", 1¼", 1½" and 2" C.C. or I.P.

Nominal Pipe Size (inches)*	Actual Pipe O.D.		O.D. Range (inches)	Catalog Number	Weight Each (lbs.)
	A IPS/CI	B CI/AC			
2 †	2.35–2.56	—	—	CDS1-2A-TAP	3.9
3	3.50 (only)	—	—	CDS1-3A-TAP	4.2
4	4.50–5.15	4.80–5.40	4.80–5.40	CDS1-4(Range A or B)-TAP	4.8
6	6.63–7.25	6.90–7.60	6.90–7.60	CDS1-6(Range A or B)-TAP	5.2
8	8.63–9.30	9.05–9.65	9.05–9.65	CDS1-8(Range A or B)-TAP	6.5
10	10.75–11.40	11.10–12.12	11.10–12.12	CDS1-10(Range A or B)-TAP	7.3
12	12.75–13.50	13.20–14.40	13.20–14.40	CDS1-12(Range A or B)-TAP	8.1

† – AVAILABLE WITH ½" – 1¼" C.C. or I.P. or 1½" I.P. TAPS



Not Recommended for PVC Pipe

For larger pipe sizes see style CDS-LD on page 5

STYLE CDS2 • DOUBLE BALE SERVICE SADDLE

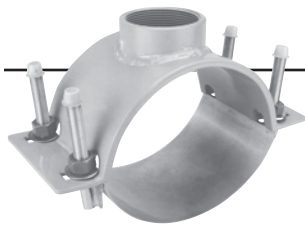
¾", 1", 1¼", 1½" and 2" C.C. or I.P.

Nominal Pipe Size (inches)*	Actual Pipe O.D.		O.D. Range (inches)	Catalog Number	Weight Each (lbs.)
	A IPS/CI	B CI/AC			
3	3.50 (only)	—	—	CDS2-3A-TAP	6.9
4	4.50–5.15	4.80–5.40	4.80–5.40	CDS2-4(Range A or B)-TAP	7.2
6	6.63–7.25	6.90–7.60	6.90–7.60	CDS2-6(Range A or B)-TAP	8.3
8	8.63–9.30	9.05–9.65	9.05–9.65	CDS2-8(Range A or B)-TAP	9.7
10	10.75–11.40	11.10–12.12	11.10–12.12	CDS2-10(Range A or B)-TAP	11.5
12	12.75–13.50	13.20–14.40	13.20–14.40	CDS2-12(Range A or B)-TAP	13.2

TO ORDER: Select desired catalog number and add tap size.

EXAMPLE: A double bale ductile iron saddle for 8" D.I.P. with a ¾" IP tap would be CNS2-8A-¾" IP.

* Other Sizes available, consult factory



Tap Sizes
2" through 4" IPS
 Other sizes available upon request.

MATERIAL SPECIFICATIONS

(8" WIDE) *

Body	Fabricated Steel	Band	T-304 Stainless Steel
Gasket	Virgin SBR Grade 30 (other compounds available)	Bolts	18-8 SST 5/8-11, NC Rolled Thread
Coating	Certified ANSI/NSF-61 epoxy	Nuts	18-8 SST Heavy Hex Xylan coated

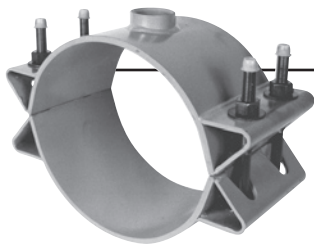
Nominal Pipe Size (inches)	Actual Pipe O.D.	Catalog Number X-Tap	Weight Each (lbs.)
6"	6.00	CFS-600-TAP	16
	6.63	CFS-663-TAP	
	6.90	CFS-690-TAP	
8"	8.00	CFS-800-TAP	17
	8.63	CFS-863-TAP	
	9.05	CFS-905-TAP	
	10.00	CFS-1000-TAP	
10"	10.75	CFS-1075-TAP	19
	11.10	CFS-1110-TAP	
	12.00	CFS-1200-TAP	
12"	12.75	CFS-1275-TAP	21
	13.20	CFS-1320-TAP	
	14.00	CFS-1400-TAP	
	15.30	CFS-1530-TAP	
14"			12

Nominal Pipe Size (inches)	Actual Pipe O.D.	Catalog Number X-Tap	Weight Each (lbs.)
16"	16.00	CFS-1600-TAP	14
	17.40	CFS-1740-TAP	
	17.80	CFS-1780-TAP	
18"	18.00	CFS-1800-TAP	15
	19.50	CFS-1950-TAP	
20"	20.00	CFS-2000-TAP	16
	21.60	CFS-2160-TAP	
24"	24.00	CFS-2400-TAP	27
	25.80	CFS-2580-TAP	
30"	30.00	CFS-3000-TAP	29
	32.00	CFS-3200-TAP	

* - FOR SPECIAL WIDTHS, CONSULT FACTORY

STYLE CFT-TO

THREADED OUTLET TAPPING SADDLE



Tap Sizes
2" through 4" IPS
 Other sizes available upon request.

MATERIAL SPECIFICATIONS

(8" WIDE) *

Body	Fabricated Steel	Coating	Certified ANSI/NSF-61 Epoxy
Gasket	Virgin SBR Grade 30 (Other compounds available upon request)	Bolts & Nuts	HSLA Steel, 18-8 SST Available

Nominal Pipe Size (inches)	Actual Pipe O.D.	Catalog Number X-Tap	Weight Each (lbs.)
4"	4.50	CFT-TO-450-TAP	21
	4.80	CFT-TO-480-TAP	
6"	6.63	CFT-TO-663-TAP	24
	6.90	CFT-TO-690-TAP	
8"	8.63	CFT-TO-863-TAP	32
	9.05	CFT-TO-905-TAP	
10"	10.75	CFT-TO-1075-TAP	40
	11.10	CFT-TO-1110-TAP	
12"	12.75	CFT-TO-1275-TAP	50
	13.20	CFT-TO-1320-TAP	
14"	14.50-15.00	CFT-TO-1500-TAP	60
	15.20-15.80	CFT-TO-1580-TAP	
	16.30-16.70	CFT-TO-1670-TAP	

Nominal Pipe Size (inches)	Actual Pipe O.D.	Catalog Number X-Tap	Weight Each (lbs.)
16"	17.30-17.87	CFT-TO-1787-TAP	68
	18.62-19.20	CFT-TO-1920-TAP	
18"	19.41-20.00	CFT-TO-2000-TAP	78
	20.93-21.57	CFT-TO-2157-TAP	
20"	21.51-22.15	CFT-TO-2215-TAP	88
	23.46-24.16	CFT-TO-2416-TAP	
24"	25.71-26.40	CFT-TO-2640-TAP	105
	28.14-28.84	CFT-TO-2884-TAP	
30"	31.60-32.20	CFT-TO-3220-TAP	115
	38.10-38.75	CFT-TO-3875-TAP	
36"	44.10-44.70	CFT-TO-4470-TAP	160
	50.40-51.00	CFT-TO-5100-TAP	
48"	56.60-57.25	CFT-TO-5725-TAP	210

* - FOR SPECIAL WIDTHS, CONSULT FACTORY

SAMPLE SPECIFICATIONS

SAMPLE SPECIFICATION - CS12 CS22

Service saddles shall be all Stainless Steel T-304, per ASTM A-240. All welds and metal surfaces shall be chemically passivated to meet ASTM A-380. All saddles shall be certified ANSI/NSF-61.



Service saddles shall be of two piece construction and a minimum of 5 inches wide for sizes 4 inch through 12 inch pipe with outlets that do not exceed 2 inch, Cascade style CS12. Sizes above 12 inch pipe shall be 8 inches wide, Cascade style CS22. The minimum O.D. range on the saddles shall be 1.3 inches.

Five inch wide saddles shall have two single bolt and receiver bars. Eight inch wide saddles shall have two double bolt and receiver bars. Bolts and nuts shall be 5/8-11, 18-8 Stainless Steel. Nuts shall be coated with Xylan to prevent galling. Washers shall be Nylon 1/16" x 1-1/4". Outlets shall be 18-8 Stainless Steel either C.C. or IPS thread.

Gaskets shall be virgin SBR grade 30. Gasket shall be a gridded mat, with tapered ends, covering the area around the outlet. The gasket shall have dual O-rings contacting the saddle body and multiple O-rings contacting the pipe. A Stainless Steel reinforcement ring shall be insert molded within the outlet section to prevent expansion under pressure.

Service saddles shall be style CS12 or CS22 as manufactured by Cascade Waterworks Mfg. Co., of Yorkville, IL (800)-426-4301

SAMPLE SPECIFICATION - CSC1 CSC2

Service saddles shall be all Stainless Steel T-304, per ASTM A-240. All welds and metal surfaces shall be chemically passivated to meet ASTM A-380. All saddles shall be certified ANSI/NSF-61.



Service saddles shall be of one piece construction and a minimum of 5 inches wide for sizes 2 inch through 12 inch pipe with outlets that do not exceed 1 inch, Cascade style CSC1. Saddles shall be 8 inches wide, 3 inch through 12 inch with outlets that do not exceed 2 inches.

Five inch wide saddles shall have one single bolt and receiver bar. Eight inch wide saddles shall have one double bolt and receiver bar. Bolts and nuts shall be 5/8-11, 18-8 Stainless Steel. Nuts shall be coated with Xylan to prevent galling. Washers shall be Nylon 1/16" x 1-1/4". Outlets shall be 18-8 Stainless Steel either C.C. or IPS thread.

Gaskets shall be virgin SBR grade 30. Gaskets shall be a gridded mat, with tapered ends, covering the area around the outlet. The gasket shall have dual

O-rings contacting the saddle body and multiple O-rings contacting the pipe. A Stainless Steel reinforcement ring shall be insert molded within the outlet section to prevent expansion under pressure.

Service saddles shall be style CSC1 or CSC2 as manufactured by Cascade Waterworks Mfg. Co., of Yorkville, IL (800)-426-4301

SAMPLE SPECIFICATION - CNS1 CNS2 CDS-LD

Service saddles shall have a Ductile Iron body per ASTM A-536, grade 65-45-12, with a certified ANSI/NSF-61 epoxy coating. Straps shall be T-304 Stainless Steel, 2 inches wide with 5/8-11, Stainless Steel bolts welded to each end. All welds and Stainless Steel surfaces shall be chemically passivated per ASTM A-380. Nuts shall be heavy hex 18-8 Stainless Steel with Xylan coating to prevent galling. Gasket shall be virgin SBR grade 30 compounded for water and sewer service.

Service saddles shall be style CNS1, CNS2, or CDS-LD as manufactured by Cascade Waterworks Mfg. Co., of Yorkville, IL (800)-426-4301

SAMPLE SPECIFICATION - CDS1 CDS2

Service saddles shall have a Ductile Iron body per ASTM A-536, grade 65-45-12, with a certified ANSI/NSF-61 epoxy coating. U-bolts shall be ASTM A-36 steel with dichromate finish 5/8-11, NC Rolled Thread. Nuts shall be heavy hex. Gasket shall be virgin SBR grade 30 compounded for water and sewer service.

Service saddles shall be style CDS1 or CDS2 as manufactured by Cascade Waterworks Mfg. Co., of Yorkville, IL (800)-426-4301

SAMPLE SPECIFICATION - CFS CFT-TO

Tapping saddles shall be fabricated from ASTM A-36 steel. Body shall be eight inches wide with a certified ANSI/NSF-61 epoxy coating. Gasket shall be virgin SBR grade 30 compounded for water and sewer service. Bolts shall be 5/8-11, NC Rolled Thread HSLA per ASTM A-242. Nuts shall be heavy hex. 18-8 Stainless Steel nuts and bolts shall be available as an option.

Tapping saddles shall be style CFS or CFT-TO as manufactured by Cascade Waterworks Mfg. Co., of Yorkville, IL (800)-426-4301



CASCADE WATERWORKS MANUFACTURING

1213 BADGER STREET • YORKVILLE, ILLINOIS 60560
(630) 553-0840 • (800) 426-4301 • FAX (630) 553-0181
www.cascademfg.com